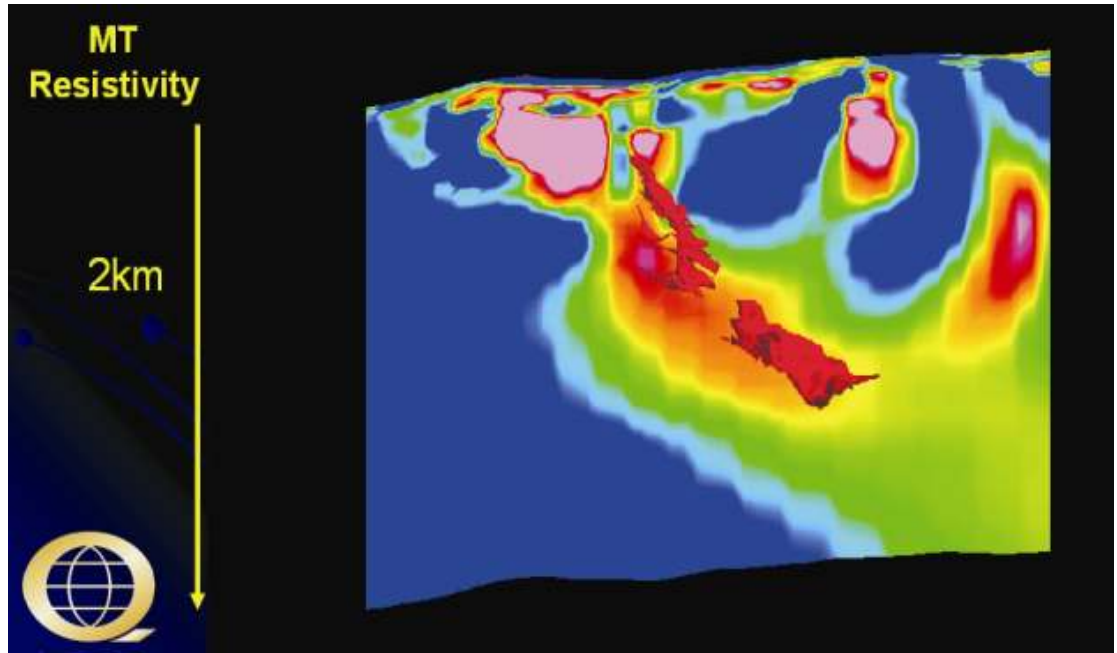


Detect VMS Deposits at Depths of up to 1.5 Kilometres

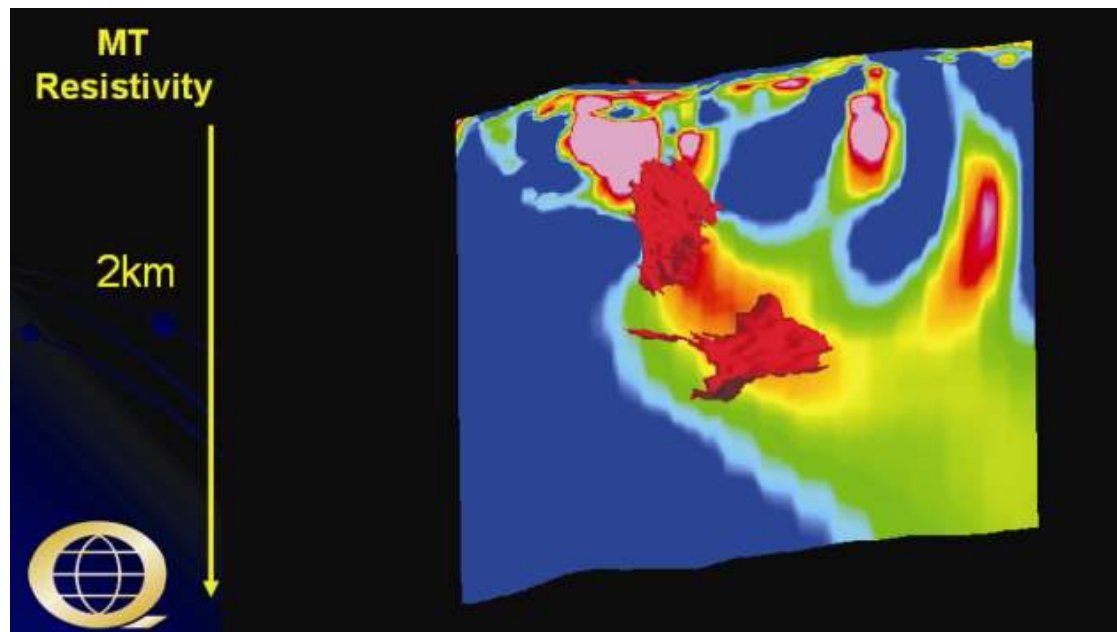
CHALLENGES:

Conventional geophysics had failed to detect and map to depth the largest of the three massive sulfide lenses found at the Half Mine base metal VMS deposit in New Brunswick. The deepest and largest sulfide lens was left undiscovered for decades. As a result the full value of the deposit was not known. Explorers need a tool that will detect and delineate to depth the full extent of VMS sulfide bodies. By knowing the full extent of mineralization explorers can focus on larger targets with larger tonnage potential.



RESULTS:

Titan 24 detected and mapped the vertical extent of the Half Mile base metal VMS deposits in New Brunswick, to a depth of over 1500 m. As a result Titan 24 was able to map the largest and deepest massive sulfide lens that was discovered several decades after the initial discovery of the near surface zone. By mapping the entire vertical extent of the VMS deposits, explorers are able to aim drilling at the largest targets with the greatest tonnage potential early in their exploration program.

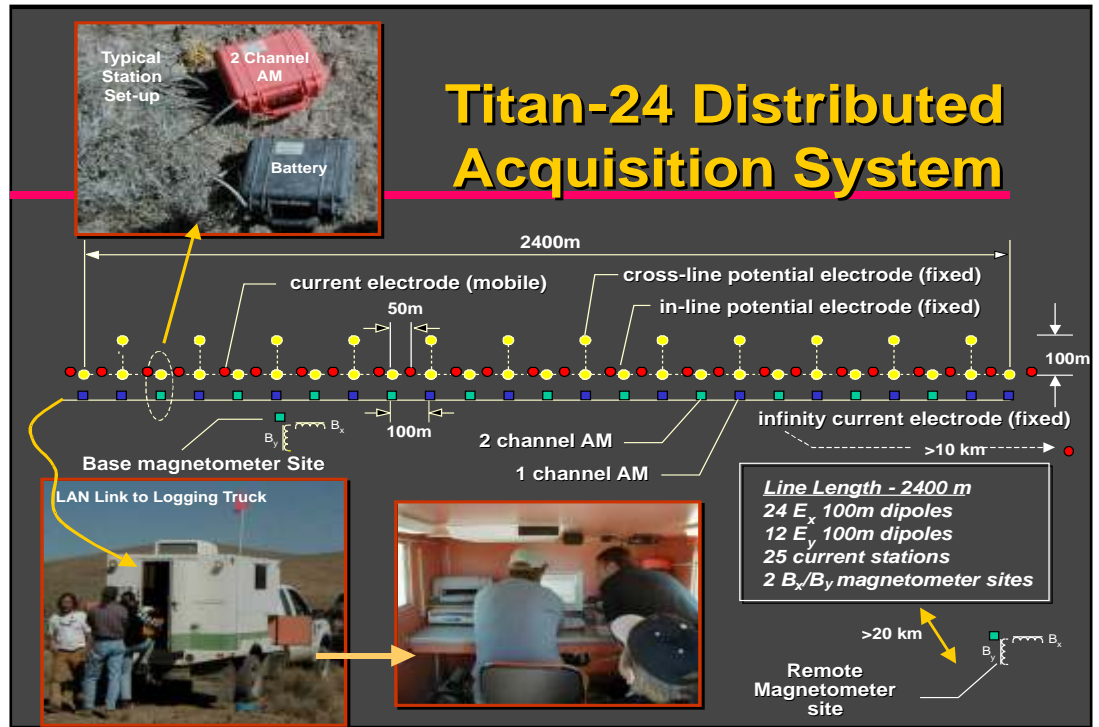




VMS Exploration- Half Mile

TITAN 24 SOLUTION:

Titan 24 enables exploration of prospective volcanic terrains to great depths beyond the limit of conventional geophysics. Titan 24 can detect base metal VMS deposits below 300 metres and discriminate large targets with high tonnage potential from smaller less prospective targets. By mapping prospective targets in 3D, Titan 24 provides explorers an indication of the shape, size and vertical and lateral extent of any potential VMS deposits.



Titan 24 MT & IP Distributed Array Survey

Other VMS Camps Explored with Titan 24:

- Matagami, Quebec
- San Nicholas, Mexico
- Joutel, Quebec
- Val D'Or, Quebec
- Timmins, Ontario
- Brunswick Base Metal Mining Camp, New Brunswick

About Quantec

Quantec Geoscience Ltd. has been helping with discovery for over 20 years.

Our offices throughout the world allow access to a collective knowledge database of thousands of projects with practically all possible geophysical surveys.

Global Office Locations

Head Office: Toronto, Canada
416 306 1941

ARGENTINA - Mendoza: 54 261 4961414

AUSTRALIA - Brisbane: 07 3359 0444

BOTSWANA - Lobatse: 267 533 0954

BRAZIL - Goiânia (Terracorp): 55 62 3541 3747

CHILE - Santiago: 56 27 173499

INDIA - Mumbai: 91 22 27820978

MEXICO - Hermosillo: 246 826 5891

PERU - Arequipa: 51 54 288686

USA - Reno: 775 827 2611



Quantec
Geoscience